

**BLOWSION**



**2011 NEW PRODUCTS**

# Steering System - Blowsion 2011 Billet System

We have developed the most Advanced and Universal steering system available for the stand-up watercraft market. For years the bushing type steering components equipped on most stand-ups have caused poor steering response as well as allowed the bars to wobble after just a few rides. With exclusive feedback from our Blowsion Pro Air Force Racers and Freeriders we have overcome the inherent design and wear problems of the stock steering as well as the current offerings in the aftermarket.

**Features:** \* CNC Manufactured from Billet Aluminum & Stainless Steel for added strength. \* Heavy Duty Bearings. Top Sealed bearing for durability & Lower thrust bearing for smooth turning. \* Three O-Rings to Protect the bearings from corrosion - Salt-Water Approved. \* Kork Kollar Included - This Slotted & Locking nut eliminates the steering from loosening and allows you to put your preferred tension on the handlebars. \* CNC Machined Handlebar clamps for both Standard 7/8" & Tapered 1 1/8" Handlebars. \* Anodized to prevent corrosion with all stainless Hardware. \* Redesigned shortened turn plate moves the rider to a more forward position which reduces porpoising & allows the rider to have a more aggressive riding position. Three variable steering ratio positions. \* Multiple bar clamp option allows you to run the handlebar of your choice. Accommodates 7/8" Straight, 7/8" Standard as well as Phat Clamped 1 1/8 inch Tapered straight and riser handlebars. \* Removable steering arm on turnplate allows you to adjust the turn-plate between Yamaha & Kawasaki.

**Applications:** Yamaha SuperJet - 1996 to current, Polaris Octane - All Years, Kawasaki - 800 SX-R All Years/ 750SX/SXi/SXi Pro. (Kawasaki SXR top mount handle pole conversions and Kawasaki 750 pole conversions only. Note does not fit on stock Kawasaki handle pole).

Please also note that this system works with all 2009 and older Blowsion and UMI turnplates as well as most aftermarket brands available. Available in three options listed below:

PN# 03-05-001 Without Turnplate - Yamaha SuperJet all, Kawi Conversion, Octane \$154.95  
 PN# 03-05-004 With Turnplate - for Standard 0 and 4 degree and straight Bars \$214.45  
 PN# 03-05-010 With Turnplate - with 1 1/8 inch Bar Clamp for Phat/Tapered bars \$249.95

Pictured With Standard Bars



Pictured w/ Phat Straight Bars



Pictured With 1 1/8 Tapered Bars



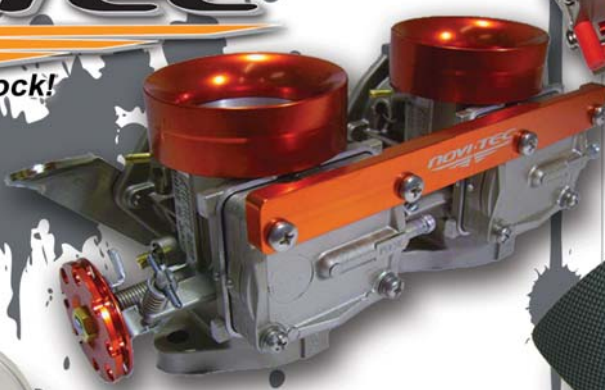
Pictured With Straight Bars



## NOVI-TEC

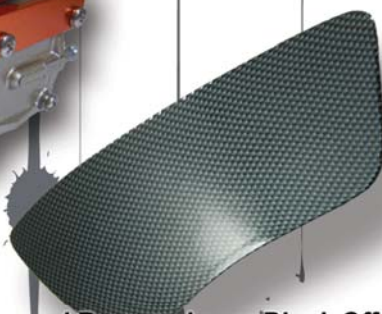
### NEW NOVI Single and Dual Carbs in stock!

PN# 01-02-111 Novi Single Size 48mm  
 PN# 01-02-112 Novi Single Size 48mm Flanged  
 PN# 01-02-141 Novi Dual 44mm Carburetors - Yamaha  
 PN# 01-02-142 Novi Dual 46mm Carburetors - Yamaha  
 PN# 01-02-143 Novi Dual 48mm Carburetors - Yamaha  
 PN# 01-02-155 Novi Dual 44mm Carburetors - Kawasaki  
 PN# 01-02-156 Novi Dual 46mm Carburetors - Kawasaki  
 PN# 01-02-157 Novi Dual 48mm Carburetors - Kawasaki



### Kawasaki Ultra 250/260 Mirror and Reverse Lever Block Offs

PN# 04-04-501 Mirror Block-off Kit Ultra 250X/LX and 260 \$119.95  
 PN# 04-04-502 Reverse Blockoff Kit Ultra 250X/LX and 260 \$59.95



### Billet Kawasaki Filler Neck

Billet aluminum fuel cap socket for the Kawasaki SXR 800, 750 and most other Kawi PWC models. Works with the stock plastic or aftermarket billet fuel caps. Includes attaching chain.

PN# 04-03-192 Kawi Filler Neck CLR Price: \$49.95  
 PN# 04-03-193 Kawi Filler Neck BLK Price: \$49.95



Pro Freerider Marc Sickerling



**Light Weight**

DESIGN PROTOTYPING PRODUCTION

## 2011 Carbon Composite Hull - Yamaha

Once again the bar has been set beyond the competitive reach in aftermarket hull construction. This master piece of adjustable hull design have been created by the esteemed Composite Lord Norbert Weber. With testing and development by Blowision Pro Freestyle/Freerider Marc Sickerling the 2011 hull design from LWDE has created a class of its own. Featuring every conceivable rider adjustment option not only are the footwells and and tray area adjustable, also included is three different ride plate combinations as well as an industry first intake duct adjustment insert which allows the rider to go from a concave to convex bottom shape for different riding conditions. Fits Yamaha engine and pump components.



Switch from the flat water back loop setup to a full freeride wave shredder with a simple change of the intake duct and ride plate inserts. The adjustable options in this incredible design make this hull the perfect choice for the all around rider who wants to enjoys all riding conditions and challenges, while still being able to compete at Pro level in freestyle competition with minimal effort flat water flairs and back flips.

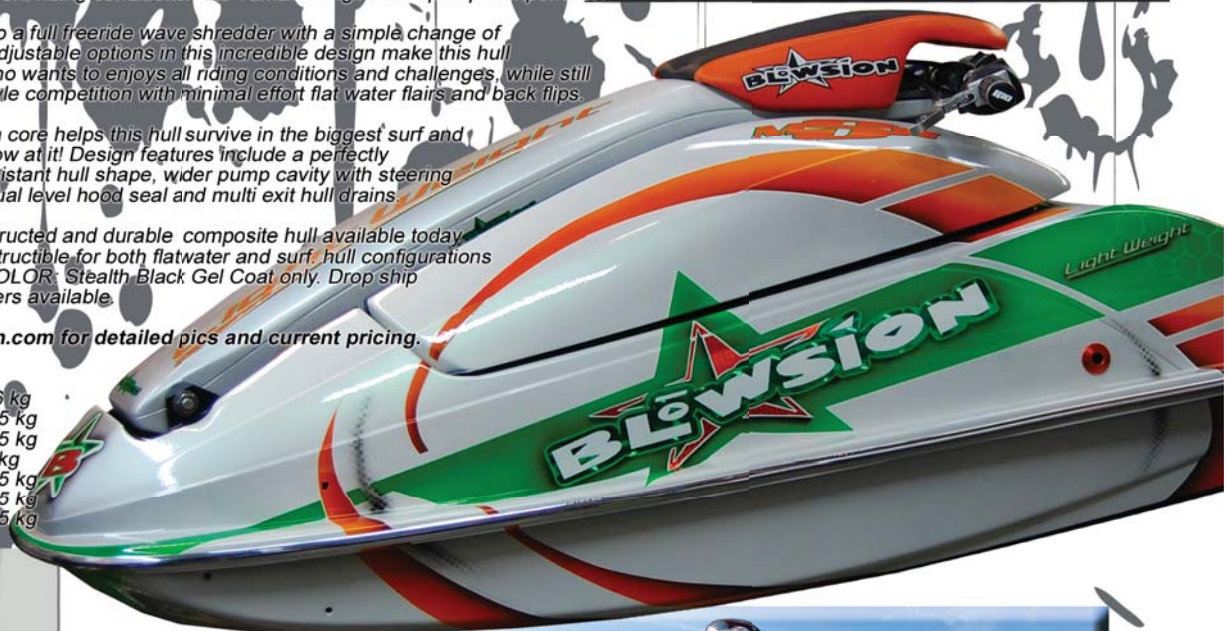
Full carbon composite laminate over a 5mm core helps this hull survive in the biggest surf and flat-water conditions Mother Nature can throw at it! Design features include a perfectly trued bottom with an EXCLUSIVE crack-resistant hull shape, wider pump cavity with steering and trim recesses, enlarged engine area, dual level hood seal and multi exit hull drains.

Flat out the most incredibly designed, constructed and durable composite hull available today. This is THE last hull you will ever buy. Indestructible for both flatwater and surf, hull configurations are available in 28KG and 36KG weights. COLOR: Stealth-Black Gel Coat only. Drop ship freight discount costs for European customers available.

PN# 04-08-014 Email or visit [Blowision.com](http://Blowision.com) for detailed pics and current pricing.

### Each Hull Includes:

Composite carbon reinforced hull	36 kg
Foot bindings carbon reinforced	2.5 kg
Foot bindings- Upper links carbon reinf	2.5 kg
Tray plate composite reinf carbon	5 kg
Ride plate composite reinf carbon	2.5 kg
Composite Int. base plate reinf carbon	2.5 kg
Hood Composite reinf carbon	7.5 kg



Light Weight

Light Weight





## R CHAMPION

### 2011 Ross Champion Hood

After months of revisions and testing, we are beyond stoked to introduce the 1996-current Yamaha Super Jets. Designed with exclusive in-house technology, the RC Freeride hood incorporates a unique two-piece construction that allows you to experience the benefit of having a standard mount as well as a forward mount. In the forward mount position, the kit placement of the handlebars is ideal for the ocean and flatwater backflip purist as well as an improvement for many surf and freestyle conditions. Ready to push your SJ freeride configuration you need only add HP and Testosterone! Going forward, you can go in full high speed shred mode. Also included for 2011 are

Constructed with a carbon/composite laminate construction, the RC Hood is built for freestyle punishment. The RC Kit comes complete with our latest dual breather option and oversize handlepole breather tubing without handholds for the freeride purist. Choose from Light Duty or Heavy Duty Surf Impact Protection (keep in mind the stock Y

The complete RC Hood set up with Pole Relocation kit includes two front covers (standard and forward pole mount), internal installation instructions. The RC Hood kit can also be ordered separately, which includes RC Hood, Billet Pole bracket and Standard Pole Mount. Gel Coat White with embossed Ross Champion and Blowsion

- PN# 05-02-090 RC hood Kit SJ Complete w/ Pole Relocation
- PN# 05-02-091 RC hood Kit SJ Complete w/ Pole Relocation
- PN# 05-02-092 RC hood Kit SJ Complete w/ Pole Relocation
- PN# 05-02-093 RC hood Kit SJ Complete w/ Pole Relocation
- PN# 05-02-094 Standard RC Hood - TWO Handholds STD Pole Mount
- PN# 05-02-095 Standard RC Hood - TWO handholds STD Pole Mount



Pro Freerider Pierre Maixent



Standard Mount Location



Forward Mount Location

## Kit

to introduce the RC Freeride hood for all put from current World Pro Freeride Champion Ross position pole mount design option to allow the rider to forward mount handlepole configuration. pole allows for much easier rotation over rider position (less porposing) for or that flatwater backflip? With the forward mount pole g to the lake or bay to race bouys or power wash your buddies? pole location, quickly swap front covers and off you additional improvements in the rear air intakes to limit water ingestion!

this beast will survive both freeride and powered Blowision billet bracket in single or g. Available with single set 360 degree handholds or lightweight flatwater Freestyle construction/weight, or Yamaha / hood for the Super Jet weighs 22-24lbs).

es the RC Hood, Billet pole bracket and breather tubing, composite mounting and reinforcement kit, and detailed d in the standard Super Jet pole configuration setup pole Mount loaction front cover. All RC Hoods are shipped in signature logos. Custom paint and color maching available.

Kit - No Handholds- Dual Breather Pole Brkt	\$1,395.00
Kit - w/ TWO 360-Degree Handholds- Dual Breather Pole Brkt	\$1,395.00
Kit - No Handholds- Single Breather Pole Brkt	\$1,395.00
Kit - w/ TWO 360-Degree Handholds- Single Breather Pole Brkt	\$1,395.00
le Location Front Cover w/ Dual Breather Pole Brkt	\$999.95
le Location Front Cover w/ Single Breather Pole Brkt	\$999.95



Pro Freerider Ross Champion

# New BLOWSION YAMAHA 1 Piece Billet Head by Kommander

Developed and designed by the Kommander himself, engine guru Steve Webster as a Blowsion exclusive offering, our new 2011 one-piece Yamaha Billet Aluminum/CNC Performance cylinder head kit gives you the best of both worlds with excellent horsepower gains, better cooling capacity and a price that is easy on the wallet. These state-of-the-art heads use the same replaceable domes of our 2 popular piece girdled Yamaha heads and utilize an improved squish band design for easy tuning and more compression for pump gas friendly horsepower. Up to 70% better cooling, increased reliability and CAD Assisted designed combustion chambers insure maximum performance and long engine life. Girdle kit available for those looking for maximum cylinder support. Domes sold seperately- see Blowsion.com for size and recommendation details.

PN# 01-03-115 Blowsion Head kit 1-pc COLOR: Gunmetal- Yamaha 701/760 Motors (domes not incl) \$189.95  
(some special order colors available seasonally- see Blowsion.com for details)

PN# 01-03-114 Blowsion Head kit 1-pc Girdle Kit

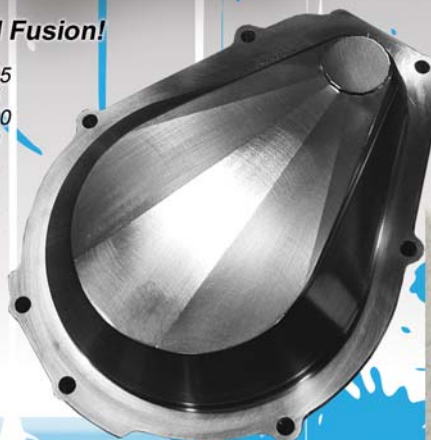
For Pricing see Blowsion.com



PERFORMANCE PARTS & ACCESSORIES

## New from the billet guru Carl Gramberg at Cold Fusion!

PN# IGNCV-701-CF	Billet Yamaha Ignition Cover	\$189.95
PN# DAMP-CF	Drive Coupler Dampener	\$42.85
PN# YPB-CF	Billet Yamaha Pole base	\$299.00
PN# FL-CF	Billet Yamaha Flywheel Lock	\$58.89
PN# BBB-CF	Billet Battery Box	EMAIL
PN# Y-FPU-CF	Billet Internal Yamaha Fuel P/U	EMAIL
PN# MH-CF	Billet Midshaft Housing	EMAIL
PN# EBM-CF	Billet Electrical Box Mount	EMAIL



## Rise of the Tide DVD

Liquid Militia toured the U.S. for the past year hitting various locations and events, and came home with clean shots that will blow your mind! Freeriding, closed course and endurance racing, this DVD shows it all!

PN#07-02-235 Rise of the Tide DVD \$19.95



Pro Freerider Jerry Jones

# Frogzskin

Frogzskin woven water screens are the latest intuitive technology answer in the constant horsepower battle between today's high performance engines requiring more and more air, yet still keeping out the resulting ingress of destructive salt and fresh water! Throw away that roll of air-restrictive duct tape - Frogzskin's open mesh intake design increases airflow, while reducing performance loss due to taping off your air intakes in order to keep your engine compartment dry and pistons firing.

Frogzskin's manufacturing process utilizes the latest technology in Micro-Fiber materials. Frogzskin's special woven material vent covers are manufactured to specific quality standards allowing maximum air-flow, while employing hydrophobic characteristic that repel water intake. Industrial grade adhesive edge binding allows for a fast and easy peel-n-stick application. This combination of materials has been thoroughly tested to meet the demanding requirements of watercraft abuse in recreational, racing, freestyle and freeride watercraft environments.

Frogzskin's current model specific kits available are listed below, but please check [Blowsion.com](http://Blowsion.com) shortly as more woven screen kits for most late model PWC are in development to be released in 2011.

- |  |         |
|--|---------|
| PN# 333-100 Kawasaki SXR 800 - 2003 to current (3pc)   | \$39.95 |
| PN# 333-101 Kawasaki Ultra 250x-09-2010, Ultra 260x and 260lx-09-2010, Ultra LX-07-2010, (4pc) | \$49.95 |
| PN# 336-100 Yamaha Super Jet - 1996 to current (5pc)   | \$49.95 |

Frogzskin's Universal Kits can be used in multiple locations, in combination with multiple sizes or model specific kits to maximize cooling airflow to your fire breather engine. Add more air to your engine compartment without ingesting water or debris. These kits include hole cutting templates and instructions---follow up and stick the Frogzskin barrier screen over the new air vent! **MADE IN THE USA**

- |  |         |
|--|---------|
| PN# 10003 Circle, 3" OD x 2" ID (2pc kit)                        | \$9.95  |
| PN# 10004 Circle, 4" OD x 2.5" ID (1pc kit)                      | \$9.95  |
| PN# 10005 5" OD - 4" ID  | \$13.95 |
| PN# 10015 1.5" OD - .75" ID (6pc kit)                            | \$9.95  |
| PN# 10025 Circle, 2.5" OD x 1.5" ID (3pc kit)                    | \$9.95  |
| PN# 10045 Circle, 4.5" OD x 3" ID (1pc kit)                      | \$9.95  |
| PN# 10175 1.75" OD - 1" ID (4pc kit)                             | \$9.95  |
| PN# 10035 Rectangle, 3" X 5" OD - 2.25" x 4.25" ID (1pc kit)     | \$9.95  |
| PN# 10037 Rectangle, 3" x 7.2" OD - 1.5" x 5.70" ID (1pc kit)    | \$12.95 |
| PN# F0017 5.5" X 6" OD - 3.5" X 4" ID (1pc kit)                  | \$14.95 |
| PN# F0061 6" x 3.25" OD - 4.5" x 2" ID (1pc kit)                 | \$11.95 |
| PN# F0025 Rectangle, 1.625" x 5" OD - 1.125" x 4.5" ID (2pc kit) | \$9.95  |



## FrogzSkin



SJ Hood Options



Pictured: SXR Hood and Dash options.



### Blowsion Brap'st vintage T-shirt!

- |              |   |         |
|--------------|---|---------|
| PN#07-01-504 | Mens T-Shirt Brap'st Steel Blue- Small    | \$21.95 |
| PN#07-01-505 | Mens T-Shirt Brap'st Steel Blue- Medium   | \$21.95 |
| PN#07-01-506 | Mens T-Shirt Brap'st Steel Blue- Large    | \$21.95 |
| PN#07-01-507 | Mens T-Shirt Brap'st Steel Blue- X-Large  | \$21.95 |
| PN#07-01-508 | Mens T-Shirt Brap'st Steel Blue- XX-Large | \$21.95 |

- |              |  |         |
|--------------|--|---------|
| PN#07-01-231 | Wms Brap'st Bella T-Shirt- Blue- Small   | \$24.95 |
| PN#07-01-232 | Wms Brap'st Bella T-Shirt- Blue- Medium  | \$24.95 |
| PN#07-01-233 | Wms Brap'st Bella T-Shirt- Blue- Large   | \$24.95 |
| PN#07-01-234 | Wms Brap'st Bella T-Shirt- Blue- X-Large | \$24.95 |

### Tubbies Give Me Chubbies T-Shirt is BACK for 2011!

- |              |                                 |         |
|--------------|---------------------------------|---------|
| PN#07-01-002 | Tubbies T-Shirt- Blue- Small    | \$21.95 |
| PN#07-01-003 | Tubbies T-Shirt- Blue- Medium   | \$21.95 |
| PN#07-01-004 | Tubbies T-Shirt- Blue- Large    | \$21.95 |
| PN#07-01-005 | Tubbies T-Shirt- Blue- X-Large  | \$21.95 |
| PN#07-01-006 | Tubbies T-Shirt- Blue- XX-Large | \$21.95 |



**NEW SHIRTS**



# ODI

**the ultimate grips just got trickier...**

**LOCK-ON  
GRIP SYSTEM**

ODI has enlisted the help of our good friends over at Troy Lee Designs to help put an artistic spin on a quality design. After hundreds of drawings and designs, what has been developed is one of the most innovative ODI grips ever offered by the masters of rubber injection!

03-05-324	Black/Grey	\$28.95
03-05-325	White/Red	\$28.95
03-05-326	Red/Black	\$28.95
03-05-327	Yellow/Purple	\$28.95

## Blowsion Tornado Air Forced 2010 Flame Arrestors

New for 2010 these stellar beauties feature a unique design water-deflection cone shape and are 100% designed and manufactured in the U.S.A. Solid and bulletproof, the filter element section is conical shaped (2.5 inches tall) with directional air flow pleats in the arrestor material. Retaining a clear velocity cone on the inside to enhance and direct airflow into the carburetor for increased overall performance, these hardcore mofo's also features an anodized aluminum outer ring with 2 color options. Extensive testing with phenomenal results in both racing, freeride and freestyle applications -- what more can you ask for?

PN# 01-02-016 Black Anodized Price: \$51.95  
PN# 01-02-016 silver Anodized Price: \$51.95

## Outerwears -Tapered Pre Filter Water Screens

Blowsion logo Outerwears flame arrestor water-resistant screens. 4" diameter Taper Fit, 2.5" tall. Fits Blowsion and Tau Ceti Tornado flame arrestors. Sold individually. Specifically formulated to prevent water ingress.  
PN#: 01-02-082 Price: \$15.00

## Blowsion Lightweight Billet Handle Pole Bolt

Weighing in at an amazing 90 grams, the Blowsion 7072 Hardened Billet aluminum handlepole bolt is 1/3rd the weight of the OEM pole bolt. A must have replacement for the weak and heavy (273 Grams!) OEM bolt, this black beauty comes with all stainless hardware to mount and go. Features engraved B-Star head. Heat treated and hard anodized for extra corrosion resistance. (Includes bolt, nut & washers) Fits all 1996 + Yamaha Super Jet, Yamaha Fx1 and Polaris Octane.  
PN# 03-04-144 Pole pivot Bolt/Nuts/washers Price \$54.95

### PHOTOGRAPHY CREDITS:

ANDRÉ DOVIC MOUVEAU [fullgaz.com]  
NATHAN SELWITZ BRIGLIA [hasfoto.com]  
JON CURRIER [joncurrierphotography.com]  
MIKE KIRK

**BLOWSION**

PHONE: +1 (503) 625.3616

FAX: +1 (503) 625.1501

WEB: blowsion.com

EMAIL: info@blowsion.com

MAIL: PO BOX 104, SHERWOOD, OR 97140, USA

SHIP: 14420 TUALATIN-SHERWOOD RD, SHERWOOD, OR 97140, USA